

**This product may be purchased from Connevens Limited secure online store
at www.DeafEquipment.co.uk**



DeafEquipment.co.uk

Solutions to improve the quality of life



iSense Micro

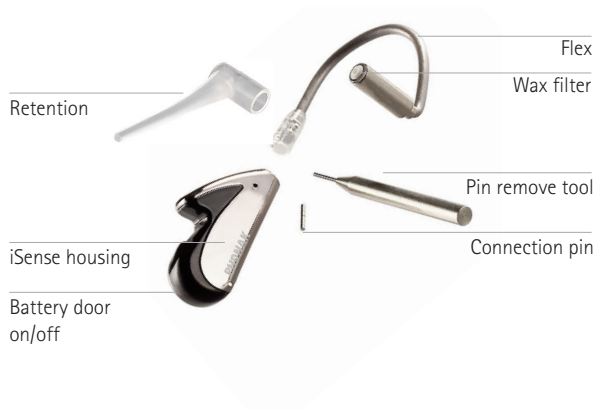
Technical Data

iSense Micro features

- Dynamic FM
- Ergonomic micro-style design
- Flexible, left/right compatible wearing concept for comfortable and secure use
- Small, flexible receiver attached to a robust housing, available in various colors
- 312 battery
- A volume control on the **inspiro** allows adjustment of the iSense Micro audio volume remotely
- On/off function integrated in battery door
- Automatic frequency Synchronisation (AFC) with WallPilot
- Direct frequency synchronization (DFS)
- Fully programmable with FM SuccessWare 4.2 or higher
- Compatible with **inspiro** and other Phonak FM transmitter



iSense Micro is a micro-style, state-of-the-art FM receiver based on Dynamic FM, the new global FM standard from Phonak. Its miniaturized and high-tech design makes the iSense Micro the ideal product for all customers who ask for a discreet and trendy solution.



Color options:



Green with Envy



Fiery Temper



Raku Glaze



Snowblade



Classic Caddy



Firebird

Relevant internet pages

Your online comprehensive FM support tool for schools
www.eSchoolDesk.com

Latest set-up tips for FM systems in combination with hearing instruments and Cochlear implants.
www.phonak.com/FM_Configurator

Your online FM knowledge base
www.FMELibrary.com

Your online FM counseling support tool
www.FMCounselWare.com

iSense Micro

General data

| | |
|------------------------------|---------------------|
| Type: | Dynamic FM receiver |
| Length (without flex): | 25 mm |
| Width: | 6 mm |
| Height: | 12 mm |
| Weight (without battery): | 2.1 g |
| Operating temperature range: | -10°C – +60°C |

HF characteristics

| | |
|---|---|
| Frequency range: | 169.4 – 176 MHz (H-band) 214 – 220 MHz (N-band) |
| Frequency: | Multi-channel, quartz stabilized |
| Frequency stability: | Better than +/-10ppm |
| Modulation: | FM (narrow band) Max. frequency deviation $\Delta f = 8\text{kHz}$ |
| Antenna: | Ear level FM antenna |
| Sensitivity at $E = 3\text{mV/m}$: | SINAD $\geq 15\text{ dB}$ |
| Selectivity at $\Delta f_{\text{RX}} = \pm 125\text{kHz}$: | $> 50\text{ dB}$ |

Power management

| | |
|-------------------------|---------------|
| 312 battery: | 140 – 150 mAh |
| Battery operating life: | 40 – 50 hours |

Standards

| | |
|-----------|------------|
| Radiocom: | EN 300.422 |
| EMC: | EN 301.489 |
| | FCC |

Audio characteristic

| | |
|---------------------------|----------------|
| Frequency Bandwidth | <100 – 5800 Hz |
| Total harmonic distortion | <2% @ 1kHz |

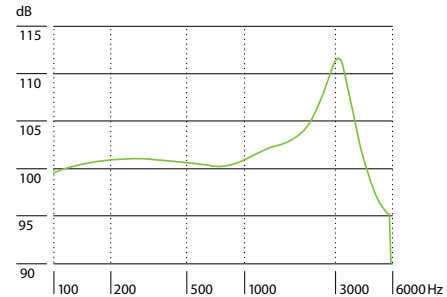
Ear simulator data

Max. output sound pressure level (Input 4kHz FM deviation)

Frequency response

— Max. gain (Input 4 kHz FM deviation)

Maximum 112 dB SPL



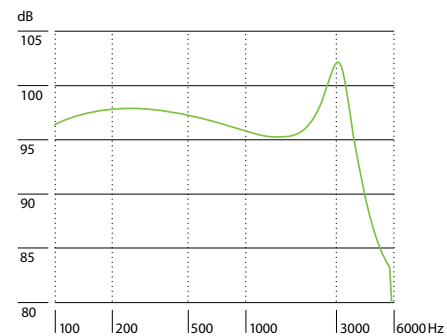
2 cm³ coupler data

Max. output sound pressure level (Input 4kHz FM deviation)

Frequency response

— Max. gain (Input 4 kHz FM deviation)

Maximum 102 dB SPL



Dynamic FM System data for inspiro and Dynamic FM receivers

Adaptive FM Advantage (AFMA): (Ambient noise level $\geq 73\text{ dB SPL}$)

Additional output gain: 15 dB

Voice Activity Detection (VAD):

Attack time: 5 ms

Hold-on time: 5 seconds

Release time: 2 seconds

Voice off attenuation: -26 dB

Wireless sub-audio datalink

Frequency range: Above the audio band

Operating range: As FM operating range

Wireless programming, monitoring and setting of FM Advantage:

FSK Link: Frequency 40.96 kHz / Data rate 1000 – 2000 Bit/s
Link from the **inspiro** to the receivers

OOK Link: Frequency 8.192 kHz / Data rate 1024 Bit/s
Link from the receivers to the **inspiro**

Operating range: 20 cm / 8 inches

MultiTalker Network*:

Digital network for up to 10 Speakers

Frequency: 2.4 GHz / Data rate 2 MBits/s

Operating range between the **inspiro** transmitters: 8 m

* Also available if **inspiro** is used with traditional FM receivers.