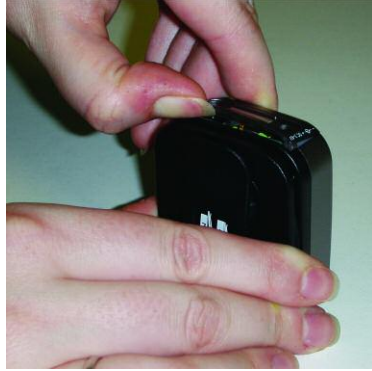
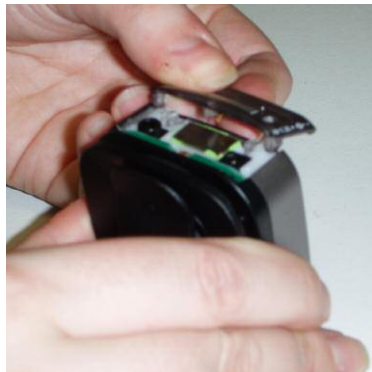


# Campus S

## Battery change procedure



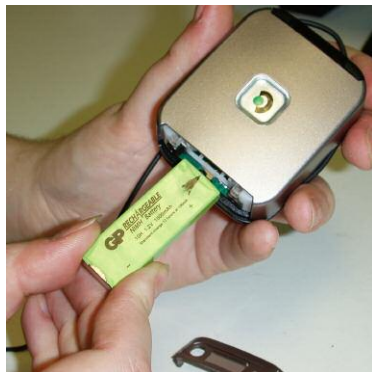
1. Turn Campus so that the belt clip is facing you. Put your fingernail under the slot & lift up the battery draw. A coin can also be used.



2. Slide Battery compartment away from you.



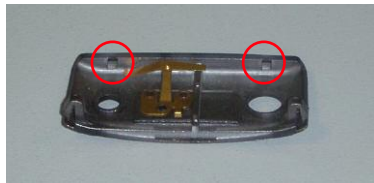
3. Invert Campus & tap into the palm of your hand, this should release the battery. If it is stuck please return to Phonak.



4. Insert the new Green battery. Please take note of the arrow showing the orientation of the battery.

# Campus S

## Battery change procedure



5. Note location lugs on the battery draw.



6. Note location lugs on the Campus body.



7. Insert the lugs on the draw into the sockets on the body first & then press down on the draw.

### Final Check

On closing of the battery draw, all of the segments in the display should illuminate. The display will then shut down. Press the power button & the Campus should be ready to use. If you have any problems please contact Phonak.