

**This product may be purchased from Connevens Limited secure online store
at www.DeafEquipment.co.uk**



DeafEquipment.co.uk

Solutions to improve the quality of life





**Echo[®] MegaLoop+[™]
Loop amplifier**

Instructions

Hearing Products
International Limited

www.hear4you.com

CONTENTS



IMPORTANT SAFETY INSTRUCTIONS

Keep these instructions for future reference

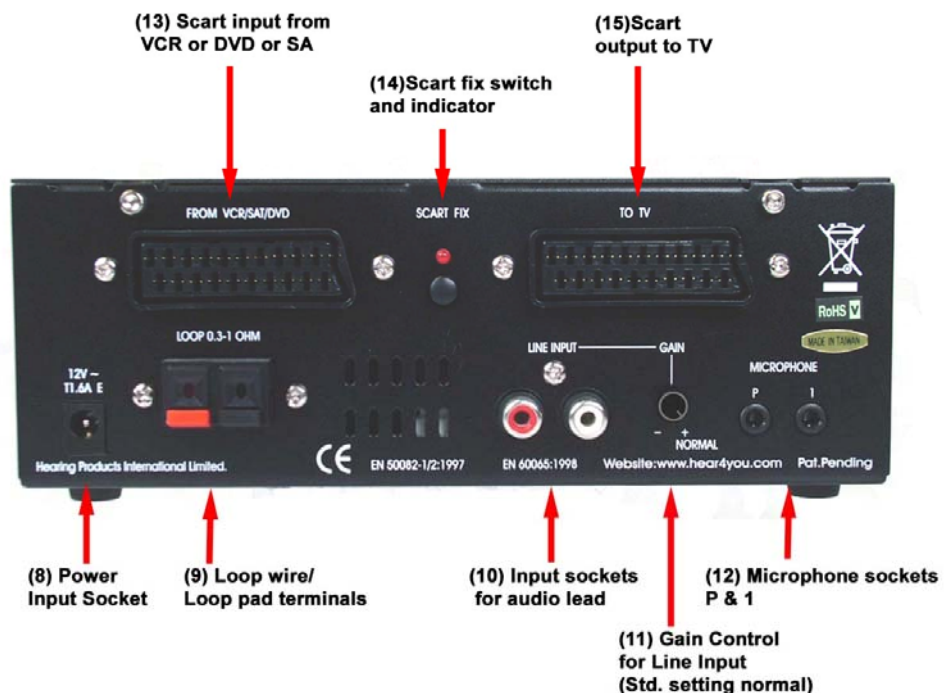
When using this unit, basic safety precautions as below should always be followed to avoid the risk of fire, electrical shock, or personal injury.

- Read and understand the instructions.
- Follow all warnings and markings on the unit.
- Install the unit securely on a stable surface.
- Only use the mains power adapter originally supplied with the MegaLoop+™ (Model FP AD 4830-12.0-1670). Do not attempt to use any other adapter or use this adapter for any other purpose than to power the MegaLoop+™.
- Install the unit where the power cord will not be subject to damage or cause a hazard.
- Warning, do not expose this apparatus to rain or moisture.
- Never place open containers of liquid, e.g. cups, on the unit or spill any liquid on the unit.
- Opening or removing covers may expose you to dangerous voltages or other risks.
- Clean only with a dry cloth.
- The unit may get warm when being used. Ensure the unit has adequate ventilation.
- Should any of the following occur, unplug the power supply from the wall outlet and refer servicing to qualified personnel :
 1. When the power supply or inlet socket is damaged or the cord damaged or frayed.
 2. If liquid has been spilled into the unit.
 3. If the unit has been exposed to rain or water.
 4. If the unit has been dropped or damaged.
 5. If the unit fails to work correctly.

FRONT VIEW



REAR VIEW



Please refer to the diagrams when installing your **MegaLoop+™** system. Simply follow the easy step by step instructions, then sit back and enjoy listening to **MegaLoop+™**'s superb sound quality. Your hearing aid must be switched to the "T" position when using the loop system. Should you have a problem with your hearing aid, try listening to the TV with a set of headphones or steto-clips plugged into the headphone socket (4) on the front of the loop amplifier - you will be surprised how flexible **MegaLoop+™** really is.

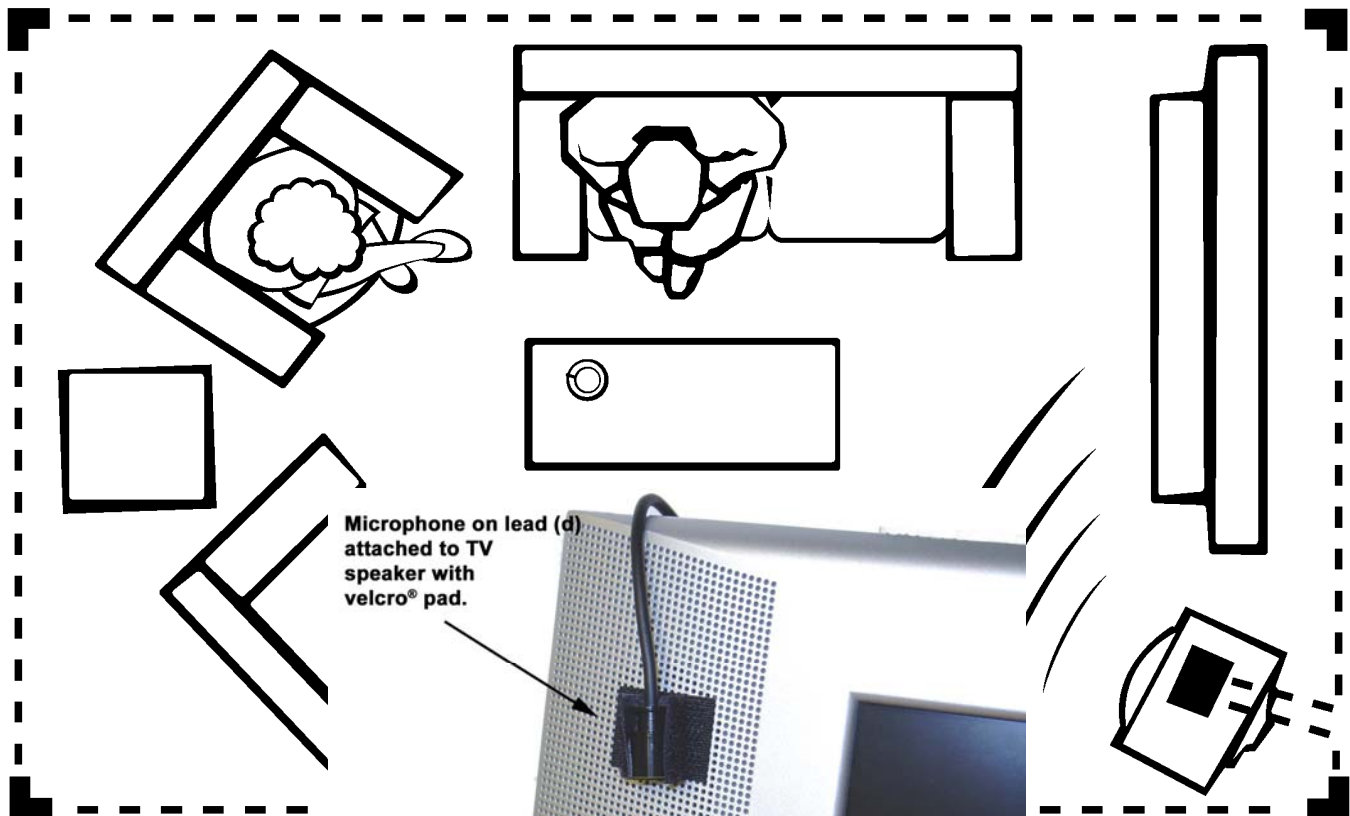
WARNING: Excessive volume from any source may damage your hearing. Turn the Volume Control (2) anti-clockwise to low before plugging in headset or switching your hearing aid to "T" position.

INSTALLATION INSTRUCTIONS

- Place the **MegaLoop+™** amplifier on top of your TV, Video Recorder or on a shelf. Make sure there is a power socket available for the mains power adapter.
- Plug the **MegaLoop+™** mains power adapter (**B**) into a standard electrical power socket, then plug the power lead into socket (8).
- Starting from the amplifier, run the loop wire around the edge of the room. The wire can be tacked up and over door frames if necessary. The wire can be tucked under the carpet or clipped to the skirting board. See ROOM LAYOUT fig. (1). Make sure you leave enough wire to reach the amplifier.
- Once a complete loop of the room has been formed, cut away any surplus wire making sure to cut away the insulation from the wire ends. Clip each end of the wire into terminals (9).

- e) If you are using a loop pad, clip the end of the lead into terminals (9). Make sure the lead is placed carefully, so as not to cause a tripping hazard. **Never run the lead across the floor unless fully under the carpet. Always remember that loose wires are a tripping hazard.**
 - f) If your TV has a SCART socket connect SCART plug into the TV (see fig. 2) and plug the other end of the lead into the **MegaLoop+™** SCART input (15). If your TV has no SCART socket, but has an audio output socket connect a lead from this socket to the line input on the **MegaLoop+™** (10).
 - g) You may have several sound sources, e.g. VCR, DVD or Satellite receiver, connected by SCART leads to your TV. In these circumstances the **MegaLoop+™** must be connected immediately before the TV. (See fig 4).
 - h) Use the SCART lead supplied with your **MegaLoop+™**.
 - i) Usually there is no problem with a SCART connected system. Very occasionally a combination of equipment will cause the sound heard via the loop to be different to that of the TV. In these circumstances check that the units are correctly connected as shown in fig 4. If they are depress the Scart Fix button on the rear of the **MegaLoop+™** (14). This should fix the problem.
 - j) If you still have a problem or if your TV has no SCART or audio output socket simply fix the **MegaLoop+™** microphone on to the TV speaker using the Velcro pad provided (see fig. 3). Plug the microphone into (12) socket No. 1.
- Note:** If you are using a second Microphone for environmental sounds such as door bell or telephone ring, then place the second microphone into (12) Socket **P** for priority.
- k) If you use a SCART lead or audio lead. Connect the **MegaLoop+™** microphone to (12) Socket P and position it approximately 2m away from the TV speaker. This will allow you to hear environmental sounds. The amount of environmental sounds heard can be adjusted from low to high using the unique background noise control (1).
 - l) **How to test your installation:** Make sure the Background Noise Control is at “N” position (1), speak into the microphone connected to (12) in a normal voice, turn the Volume Control knob up (2) and when the Red light (5) starts to flash you know that your system is working. Turn the Volume back to your desired listening level.

Room Layout Fig (1)



IMPORTANT

The **MegaLoop+**[™] microphone is very sensitive, and too much volume out of the TV speaker can distort the sound in your hearing aid when in the “**T**” position. The TV speaker’s volume should be set at a level comfortable for a normal hearing person, if you live alone we recommend that you turn the TV volume down so far that you **cannot** hear the TV with your hearing-aid control switch in the NORMAL or “M” position.

Microphone priority function

The microphone sockets (12) are marked **(1)** and **(P)**. Socket No. **(1)** is the standard socket to use when connecting the microphone to a TV or Hi-fi speaker. Socket **(P)** stands for priority and gives a louder signal than socket **(1)** this is very useful when using a second microphone for environmental sounds that must be heard over and above the TV or Hi-fi.

Tone Control (3)

Adjust to fit your own hearing loss. Turning the control in a anti-clockwise direction tones become **lower**. Turning clockwise the tones become **higher**. Most people like the Tone (3) at about 12 o’clock position.

Headphone Socket (4)

Any standard headphones or Echo[®] Neck-Loop can be connected. **Always** turn volume control (2) fully anti-clockwise to “0” position before connecting any headphones or Echo neck loop, then adjust upwards to a comfortable sound level. **If you do not follow these instructions you could damage your hearing! Remember to turn your hearing aid to the ‘T’ position when using a neck loop**

GAIN Control (11)

The factory setting for Gain Control Knob (11) is “Normal” position. This position is preset for most Scart and Audio input signals

N.B If the serial number is removed your warranty is invalid

Hearing Products

International Limited

Echo House
26/27 Haigh Park
Stockport
SK4 1QR
England

Tel. +44 (0) 161 480 8003

Fax +44 (0) 161 480 8006

www.hear4you.com

Printing revision 24/04/2007