

**This product may be purchased from Connevens Limited secure online store
at www.DeafEquipment.co.uk**



DeafEquipment.co.uk

Solutions to improve the quality of life



**MOTION
DETECTOR/ALARM**

Cat No. TG115

**MOTION
DETECTOR/ALARM
WITH REMOTE
CONTROL**

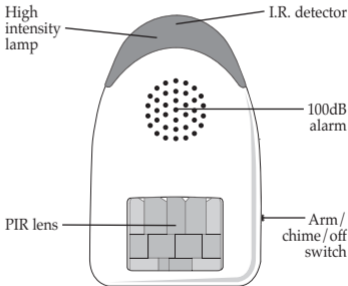
Cat No. TG115R



**INSTALLATION & OPERATING
INSTRUCTIONS**

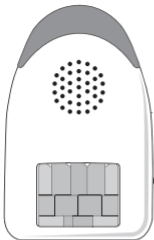
TG115 - Motion Detector/Alarm
***TG115R - Motion Detector/
Alarm with Remote Control***

Please read the instructions before using the product and retain for future use.

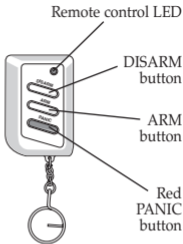


TG115

Fig 1



TG115R



Introduction

This motion detector/alarm comes in two variations – with remote control (TG115R) and without (TG115). The function of the main unit is the same in either case apart from a PANIC function available on the remote control version.

Both versions have a bright flashing light as well as a 100dB alarm and they also have exit and entrance delays built in.

Battery Installation/Change

Main Unit - Remove the cover retention screw (see fig 2). Press down on the battery compartment cover (as shown in fig 2) and slide outwards in the direction of the arrows. Remove the old batteries if necessary and install 4 new alkaline AA batteries. Slide the cover back into place ensuring the lugs and catches engage with the case correctly.

Main unit – rear view

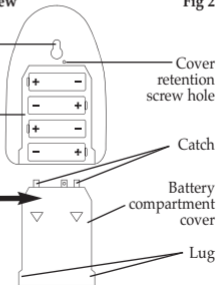
Fig 2

Keyhole fixing

4 x AA alkaline batteries

Press down here

Main unit – rear view

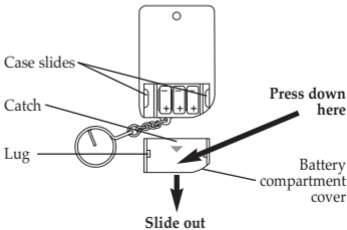


Remote Control - Press down as shown in fig 3 and then slide out. If necessary remove the batteries from the compartment and insert 3 new SR44 silver oxide batteries with polarities as shown in fig 3. Engage the catch and the lugs on the battery compartment cover under the case and case slides respectively and push the cover home.

4

Remote control – rear view

Fig 3



Points to Note

- For indoor use only.
- Keep away from direct sunlight.
- Loud alarm – keep away from ears.
- Do not locate near radiators or heaters.
- Do not locate near fans.

Installation

The TG115/TG115R is a wall mounted unit and has a PIR detection range of between 5 and 7m across a 90° angle (see fig 4). It should be mounted 1.5 to 2m above floor level.

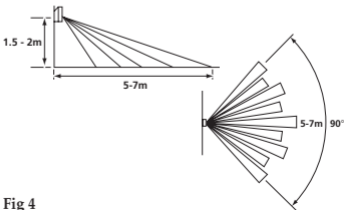
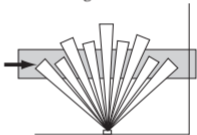


Fig 4

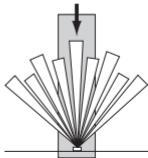
Choose a position where an intruder would be most likely to pass across the face of the unit. Having decided on a position mark and drill a single fixing hole. Fit the plug (if necessary) and screw provided. The screw (with head left 2.5mm proud of the fixing surface) engages with the keyhole fixing on the back of the case (see fig 2).



Best sensitivity



Worst sensitivity



Operation (Without Remote - TG115)

Arming

Slide switch to ARM and 3 short bleeps will be heard in confirmation. 60 seconds later (allowing for PIR stabilisation and user exit) a single bleep will be heard indicating the system is ready for detection.

Entry Delay and Alarm Timing

There is a 20 second delay after detection before the unit sounds the alarm (allowing users to disarm the unit by switching to OFF when returning). The alarm sounds for 2 bursts of 30 seconds separated by 30 seconds of silence. The light flashes continually during this period and carries on until the unit is switched to OFF.

Chime

Switch to CHIME and the unit will respond to detection by sounding a two tone chime after the 60 second PIR stabilisation period. This is particularly useful for carrying out a "walk" test of the detection area prior to putting the unit into use and periodically during the unit's life to maintain confidence.

Operation

(With Remote – TG115R)

Arming

With slide switch on main unit set to OFF press the ARM button on the remote and 3 short beeps will be heard in confirmation followed by a single beep after 60 seconds exit time has elapsed.

Disarming

Press the DISARM button.

Panic Button

Press the PANIC button to summon help in an emergency and the alarm will sound for a 30 second period and then stop. It may be stopped before this by pressing the DISARM button.

Trouble-Shooting Guide

Unit will not arm or chime:

Remove the main unit batteries, wait for 3 minutes, replace batteries and try again.

Specifications

PIR detection:	5 – 7m over 90°
Alarm:	100dB
Batteries:	4 x AA alkaline (main unit) 3 x SR44 or similar* (remote control) *357, SR44W, RW42, SG13, SR1154, V303, A.
AC mains adaptor: (not included)	DC6V, 600mA with centre female +ve

3 Year Guarantee

In the unlikely event of this product becoming faulty due to defective material or manufacture within 3 years of the date of purchase, please return it to your supplier in the first year with proof of purchase and it will be replaced free of charge.

For the second and third years or any difficulty in the first year telephone the helpline on 020 8450 0515.

10

THREE YEAR



GUARANTEE

HELPLINE
020-8450-0515



For a product brochure please contact:

Timeguard Ltd.

Victory Park, 400 Edgware Road,
London NW2 6ND

020-8452-1112

or email csc@timeguard.com