

**This product may be purchased from Connevens Limited secure online store  
at [www.DeafEquipment.co.uk](http://www.DeafEquipment.co.uk)**



**DeafEquipment.co.uk**

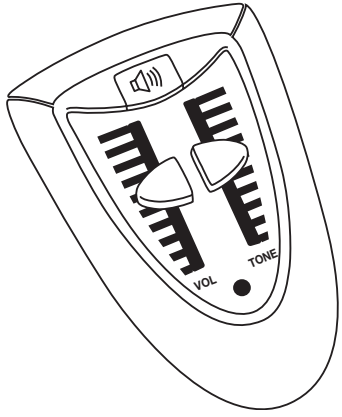
Solutions to improve the quality of life





# phone PLUS

## telephone handset amplifier



### Operating Instructions

#### Introduction

The phone PLUS telephone handset amplifier will benefit anyone who finds telephone caller's voices quiet or muffled.

The phone PLUS is discreet, stylish and easy to use.

Simply connect the phone PLUS between the base unit and handset of your corded telephone for significantly enhanced sound quality.

Callers voices can be amplified by up to 40 dB (100 times) with additional tone control of +/- 6 dB helping to improve clarity.

Adjust the volume and tone controls to your personal needs, making conversations loud and clear.

Anyone can use the telephone with the phone PLUS connected, setting the phone PLUS to minimum returns the sound level to normal so there is no need to disconnect for other users.

The phone PLUS operates on 2 AA batteries (supplied) and through enhanced power management technology the batteries may last up to two years.

**The phone PLUS cannot be used with cordless and mobile phones or handsets with integrated keypads.**

#### Precautions

#### WARNING

The sound output levels from the phone PLUS can be very high.

It is recommended that the volume control is returned to zero after each use, this will prevent hearing damage to a user who does not require extra amplification.

The manufacturer cannot be held responsible for damage which is caused by not using the phone PLUS in compliance with the safety precautions.

Do not open the casing of the phone PLUS except to change batteries or the HWM. No user serviceable parts can be found inside.

Ensure that mains powered equipment is disconnected before any connections are made to the phone PLUS.

Do not expose the phone PLUS to rain or any other forms of moisture.

Do not place the phone PLUS close to sources of heat, such as radiators.

Only AA type batteries can be used, the type which are supplied are alkaline, rechargeable and normal batteries can be used but we recommend alkaline.

Do not mix old and new batteries.

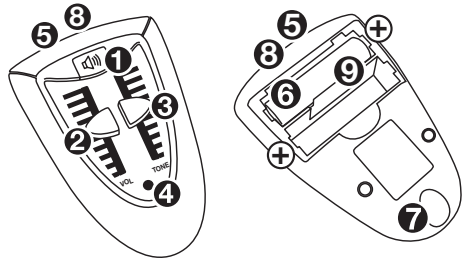
Do not dispose of batteries in a fire as they may explode.

Do not open or mutilate the batteries, and do not short the batteries with conductive materials such as coins or rings, as this may cause the batteries to overheat.

If you are using rechargeable batteries, please only charge them in accordance with the instructions supplied with the batteries and charger.

It is advisable to remove the batteries if the phone PLUS will not be in use for a long period of time.

#### Product Overview



- 1 Boost button
- 2 Volume control
- 3 Tone control
- 4 LED indicator
- 5 Headset/Neckloop socket
- 6 Battery compartment
- 7 Handset connection socket
- 8 Telephone base connection socket
- 9 Handset wiring module

#### Setting up

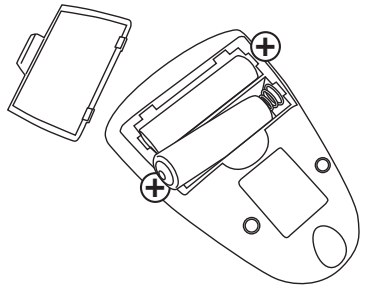
**A**

##### IMPORTANT:

**Always disconnect the telephone cord from the wall prior to fitting new batteries.**

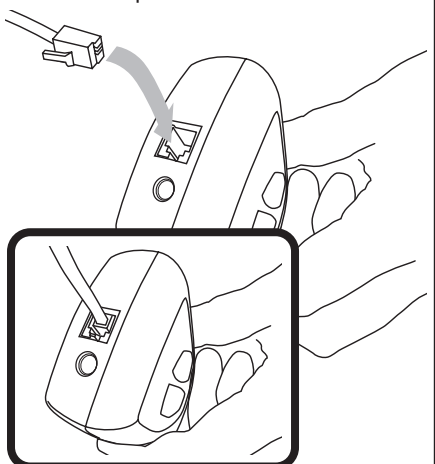
The phone PLUS is powered by 2 AA batteries (supplied).

These batteries will need to be fitted (as shown) before operation.



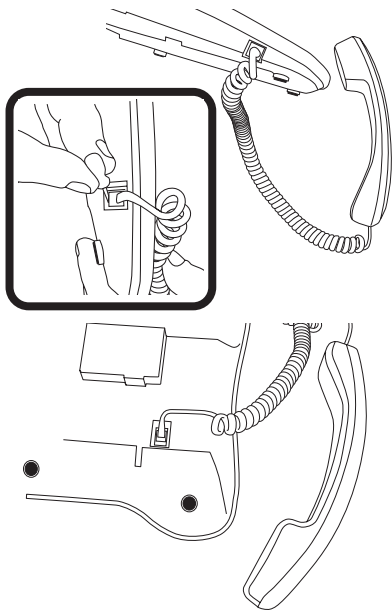
**B**

Fit the supplied short telephone lead into the amplifier as shown.

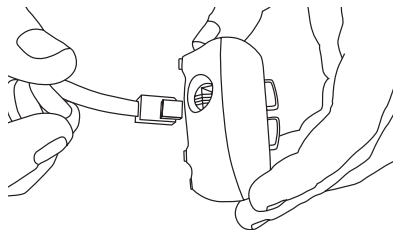


**C**

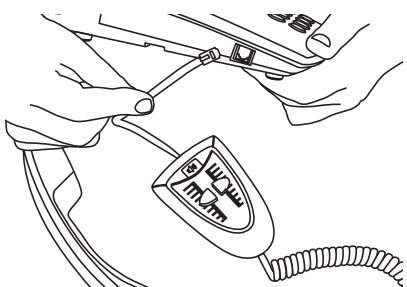
Unplug the handset cord from the base of your telephone, (do this by locating the socket at the end of the handset cord, there will be a small tab, this should be pressed towards the body of the plug using the small screwdriver provided, then pull the cord and the plug should pull free).

**D**

Now insert the disconnected lead into the socket situated at the front (narrow end) of the phone **PLUS** unit (as shown).

**E**

Connect the phone **PLUS** to the telephone base using the short connecting lead (as shown).



Replace the handset and ensure that the volume control on the phone **PLUS** is set to zero and the tone control is in the middle (normal) setting.

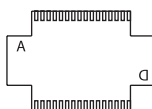
Pick up the telephone handset and listen for the dialling tone (the volume control can now be adjusted to suit your requirements).

**If the dial tone can be heard and the green LED is illuminated the installation has been carried out successfully. Continue with instructions for use.**

**If you can not hear a dial tone or the person at the other end can not hear you, the phone **PLUS** will need to be configured to suit your phone.**

**F**

The phone **PLUS** comes configured in position A. To check this hold the narrowed end of the phone **PLUS** towards you and the letter A will be visible.

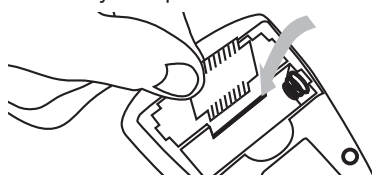


To change configuration first remove the batteries. Remove the HWM and re-seat it in one of the 3 remaining configurations B, C or D. Replace the batteries.

Ensure HWM is seated in position so that the battery cover can close easily and without force.

**G**

To remove the HWM simply hold it and pull straight up from the amplifier unit, to reseat the HWM simply push the HWM into the slot in the battery compartment



## Instructions for use

### ■ Headset/Neckloop socket

Use the telephone handset as normal to speak into, but you can listen through a headset or neckloop plugged into this socket.

### ■ Volume control

Adjust the volume to the setting which is most comfortable by moving the volume control slide switch.

### ■ Tone control

Adjust the tone control slide switch up or down to a position which allows you to hear clearly, the normal tone can be found at the middle point on the tone control slide.

When the control is moved up the higher frequencies will be boosted and if the control is moved down lower frequencies will be boosted.

### ■ Boost control

Press and hold down the boost button for further amplification, the boost function doubles the output at the chosen volume setting.

When using the boost function background noise and the possibility of feedback occurring will be greatly reduced as this function mutes the microphone in your handset.

When speaking, remember to release the boost button so that the person you are speaking to can hear you at their normal volume level.

### ■ LED Indicator

The phone **PLUS** turns on automatically every time the telephone handset is lifted, this is indicated by the green LED illuminating.

The phone **PLUS** will switch off automatically approximately 30 seconds after the telephone handset is replaced onto the cradle, this will be indicated by the green LED no longer being lit.

Please note that switching the unit on and off is an automatic function not related to the position of the volume control.

If the battery in the phone **PLUS** is low or flat the telephone will still function as normal providing the volume control is returned to the minimum setting.

Not returning the volume control to minimum will give reduced output, when the batteries are exhausted.

## Troubleshooting

- Q. Green LED does not illuminate when the telephone handset is lifted.
- A. Replace batteries and/or check all connections.
- Q. No amplification evident.
- A. Disconnect the phone **PLUS** from the telephone base unit and plug the handset directly into the telephone base unit, if the telephone works as normal the phone **PLUS** has developed a fault and should be returned.

## EU Declaration of Conformity

Hereby, Sarabec Ltd declares that the PL51 telephone amplifier is in compliance with the essential requirements and other relevant provisions of the R&TTE directive 1999/5/EC.

The full declaration of conformance for the PL51 telephone amplifier is available from Sarabec Ltd, 15 High Force Road, Middlesbrough TS2 1RH.