

**This product may be purchased from Connevens Limited secure online store
at www.DeafEquipment.co.uk**



DeafEquipment.co.uk
Solutions to improve the quality of life



PHONAK

hearing systems

Remote Control
WatchPilot™ 2
User Guide

CE

Welcome to the Phonak world of communication!

Congratulations on choosing WatchPilot2.

The WatchPilot2 is a convenient and discreet remote control. It is also an elegant, water-resistant, Swiss quality watch. It provides an easy way for you to select the programs of your hearing instruments and to quickly adjust them to the most comfortable volume.

Please read this user guide carefully and contact your hearing care professional if you have any questions.

Phonak – the leader in hearing instrument technology!

Description



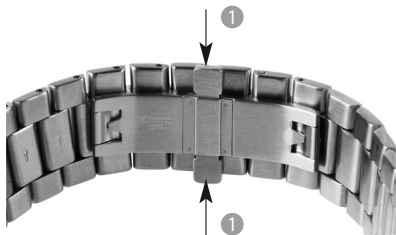
1. Program selection (··· →A→1→2→3→···)
2. Volume up
3. Volume down
4. FM mode selection (··· →FM→FM+M→···)
5. Crown for adjustment of watch settings
6. LED indicator
7. Date display (men's model only)

Main features



-
- Swiss quality movement
 - Rugged, scratch-proof sapphire glass
 - Case and wristband made of durable stainless steel
 - Caseback made of metallized mineral glass
 - Water-resistant to 30 m
 - Remote control range approx. 30 cm
 - Date display (men's model only)

Closing and opening the wristband



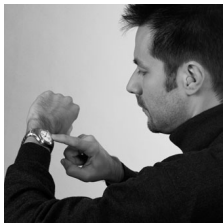
- Closing

Press the wristband onto the clasp.

- Opening

Press both buttons ① simultaneously.

Remote control of hearing instruments



LED Indicator

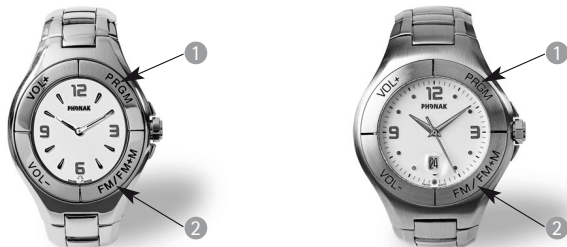


Hold the WatchPilot2 so that you can conveniently read the time ①. The distance between the WatchPilot2 and your hearing instruments should be about 30 cm. Press the appropriate button on the WatchPilot2 until the red LED indicator on the dial flashes briefly.

☞ Both hearing instruments are controlled simultaneously.

Your hearing instruments must be switched on to receive the commands from your WatchPilot2.

Program selection



By pressing the "PRGM" button ①, you can activate the next program of your hearing instruments. The "FM/FM+M" button ② is enabled if your hearing instruments are equipped with FM receivers. By pressing this button, you can toggle between "FM" (the wireless microphone is active, the microphones in the hearing instruments are inactive) and "FM+M" (both the wireless microphone and the microphones in the hearing instruments are active). When you press the "PRGM" button after the "FM/FM+M" button, your hearing instruments will be reset to the program which was active before you pressed "FM/FM+M".

Volume adjustment



- 1 Press the "VOL+" button to increase the volume incrementally.
- 2 Press the "VOL-" button to decrease the volume incrementally.

Setting the date



The men's model has a date display.

- Pull the crown out to the first position ①.
- Turn the crown clockwise until the correct date appears.
- Press the crown back home ②.

Setting the time



- Pull the crown to the outermost position ①.
- Turn the crown clockwise until the correct time is set.
- Press the crown back home ②.

Changing the battery

Your WatchPilot2 has two batteries, one for the watch and one for the built-in remote control. The batteries should be replaced only by qualified personnel (hearing care professional or watch retailer). Unauthorized opening of the watch case may impair its water resistance.

Battery types:

- Watch function, ladies' model: No. 317 SR516SW
- Watch function, men's model: No. 362 SR721SW
- Remote control, both models: CR 1620 (16 x 2 mm)

Battery life:

2–4 years (depending on usage)

When to replace a battery

- Watch function (men's model only): When the seconds hand begins to jump 4 steps forward every 4 seconds. This function is not available in the ladies' model.
- Remote control (both models): When the red light in the dial briefly flashes 10 times after a button has been pressed.

It is preferable to replace both batteries at the same time.

Caring for your WatchPilot2

- To clean the WatchPilot2, use only a soft cloth. Never use solvents or other cleaning agents.
- Have your WatchPilot2 – and your hearing instruments – regularly checked by a hearing care professional who can also adjust the wristband to the size of your wrist.

Important

- Have the batteries of your WatchPilot2 replaced only by qualified personnel.
- Strong magnetic fields (such as near computer screens) can interfere with the transmission of the signal to the hearing instruments. In this case, try again after having moved 1 to 2 meters away from the source of interference.
- Do not expose your WatchPilot2 to extreme temperatures (colder than -10°C or hotter than $+55^{\circ}\text{C}$) and avoid excessive shock and vibration.
- Your WatchPilot2 comes with a designer wristband that precisely matches the shape of the watch case. Wear the WatchPilot2 only with an original WatchPilot2 wristband.



The symbol with the crossed out disposal bin indicates that this hearing instrument shall not be treated as household waste. Please hand over your old or unused hearing instrument to the applicable collection point for the recycling of electrical and electronic equipment or bring your old hearing instrument to your hearing care professional for appropriate disposal. By ensuring this product is disposed of correctly, you will help prevent potential negative effects on the environment and human health.

Warning

- The WatchPilot2 is compatible with most cardiac pacemakers and other medical devices. Nonetheless, we strongly advise that you consult your doctor before using the WatchPilot2 together with any medical devices*.
- The case and wristband are made of stainless steel. The material has been tested for skin irritation and found safe according to Standard EN 1811, the commonly used standard in watchmaking. We recommend that if you are allergic to stainless steel, do not use WatchPilot2.

*Information relevant for electromagnetic compatibility with medical devices:

carrier frequency: $f_c = 40.960 \text{ kHz}$

modulation: CPFSK ($f_0 = 38.880 \text{ kHz}$, $f_1 = 43.040 \text{ kHz}$)

bit-rate: 1280 bit/s

magnetic field: 0.1 mA/m at 1 m

Phonak distributors worldwide

Group companies:	(detailed information on www.phonak.com)
Australia	Phonak Australasia Pty. Ltd., Baulkham Hills N. S. W. 2153
Austria	Hansaton Akustische Geräte GmbH, 5020 Salzburg
Belgium	Lapperre N.V., 1702 Groot-Bijgaarden
Brazil	CAS Produtos Médicos, São Paulo – SP 04363-100
Canada	Phonak Canada Limited, Mississauga, Ontario L5S 1V9
China	Phonak Group (China), Shanghai City 200233
Denmark	Phonak Danmark A/S, Nitvej 10, 2000 Frederiksberg
France	Phonak France SA, 69500 Bron
Germany	Phonak GmbH, 70736 Fellbach-Oeffingen
Italy	Phonak Italia S.r.l., 20159 Milano
Japan	Phonak Japan Co., Ltd., Tokyo 101-0044
Jordan	Phonak Middle East, 11181 Amman
Netherlands	Phonak B.V., 3439 ME Nieuwegein
New Zealand	Phonak New Zealand Ltd., Takapuna, Auckland 9
Norway	Phonak AS, 0105 Oslo
Poland	Phonak Polska Sp. z o.o., 00-567 Warszawa
Spain	Phonak Ibérica S.A., 03008 Alicante
Sweden	Phonak AB, 117 34 Stockholm
Switzerland	Phonak AG, Phonak Schweiz, 8712 Stäfa
United Kingdom	Phonak UK Limited, Warrington, Cheshire WA1 1PP
USA	Phonak LLC, Warrenville, IL 60555-3927
Independent general agents:	A complete list of Phonak distributors is available at Phonak's Internet site: www.phonak.com . Please visit us or ask your hearing care professional for information.
Manufacturer:	Phonak AG, Laubisrütistrasse 28, CH-8712 Stäfa, Switzerland



Service and Warranty

Phonak offers you a comprehensive global warranty which becomes effective on the date of purchase. Please ask your hearing care professional about the details and duration. This warranty covers any repairs due to defects in material and/or workmanship. The warranty does not cover damage from improper handling or care, exposure to chemicals, immersion in water or undue stress. Damage caused by third parties or non-authorized service centers renders the Phonak warranty null and void. This warranty does not include any services to the product performed by a hearing care professional in their office. This warranty applies to the Phonak products listed below:

Serial number:

Date of purchase:

Your hearing care professional: