

Using an fmGenie with a telephone at home

Hearing aid wearers who already benefit from an fmGenie radio system can also use their fmGenie to enjoy much clearer phone conversations by fitting a telephone listening adaptor and a transmitter input adaptor.

The telephone listening adaptor can be fitted to any phone, analogue or digital, which has a plug in 'modular' handset.

The transmitter input adaptor plugs into the fmGenie transmitter and the phone conversation is then fed by the fmGenie receiver directly to the wearer's hearing aid either by direct input or neck loop.

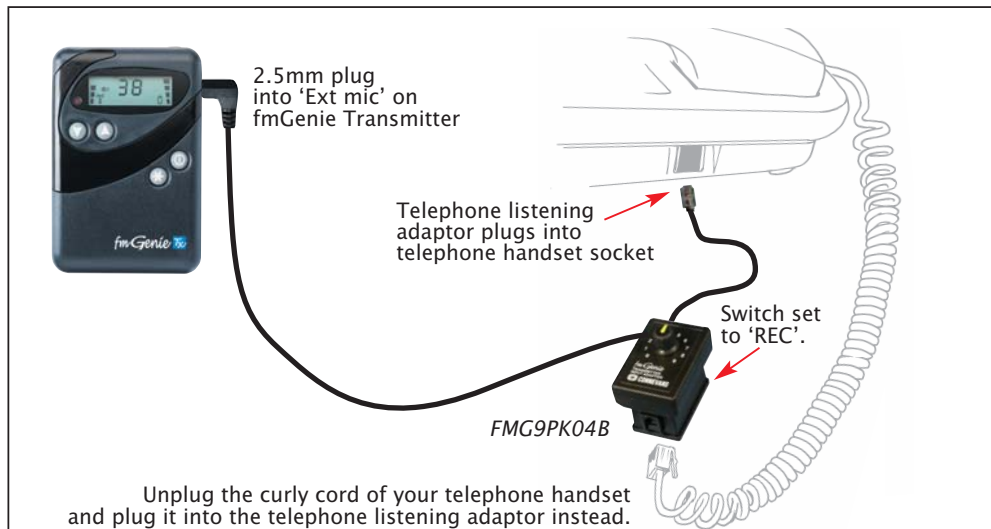


Using a CRM-220 with a telephone at home

Hearing aid wearers who already benefit from a CRM-220 radio system can also use their CRM-220 to enjoy much clearer phone conversations by fitting a telephone listening adaptor and a transmitter input adaptor.

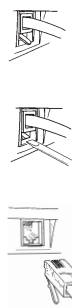
The telephone listening adaptor can be fitted to any phone, analogue or digital, which has a plug in 'modular' handset.

The transmitter input adaptor plugs into the CRM-220 transmitter and the phone conversation is then fed by the CRM-220 receiver directly to the wearer's hearing aid either by direct input or neck loop.



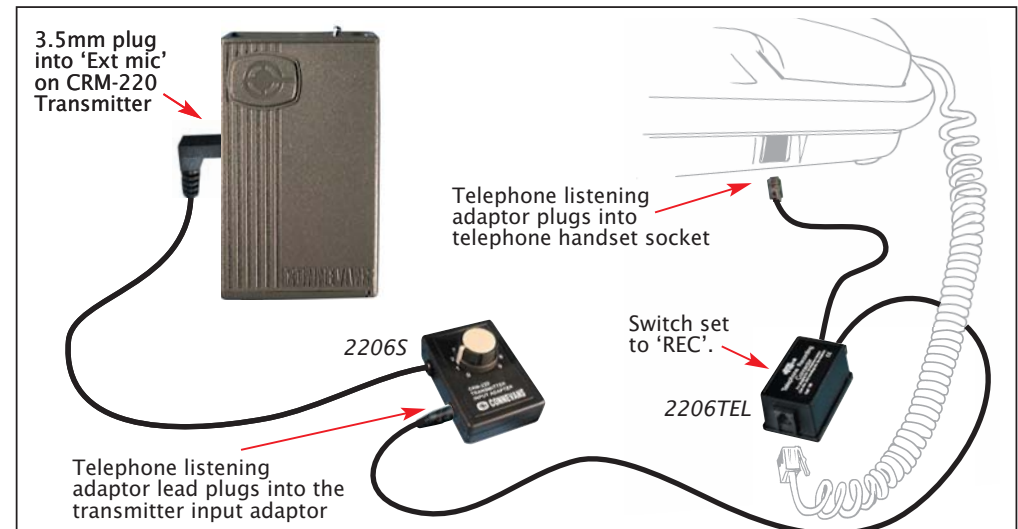
fmGenie telephone listening adaptor

The adaptor is connected in the curly cord lead between the telephone handset and the base unit. The 2.5mm jack then plugs into the fmGenie microphone socket - Tx or Rx.



- Unplugging the telephone handset
- Sometimes it is necessary to use a small screwdriver to release the latch to remove the plug
- Telephone handset cord connection plug & socket

For full details see *Connevens Catalogue*, section 1 - fmGenie



Telephone listening adaptor

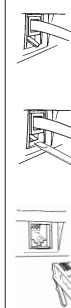
Part no. 2206TEL



CRM-220 transmitter input stereo input adaptor

Part no. 2206S

A transmitter input adaptor also allows you to connect a CRM-220 transmitter to other equipment such as hi-fi's, keyboards, computers, personal stereos, etc.



- Unplugging the telephone handset
- Sometimes it is necessary to use a small screwdriver to release the latch to remove the plug
- Telephone handset cord connection plug & socket

For full details see *Connevens Catalogue*, section 1 - CRM-220

BPI 40THT2 V 3.1 June 2008 - fmGenie

BPI 40THT2 V 3.1 June 2008 - CRM-220



CONNEVANS LIMITED

54 Albert Road North, Reigate, Surrey RH2 9YR Telephone: 01 737 247571
Info website: www.connevens.com Online shopping: www.DeafEquipment.co.uk

SHEET T2a



CONNEVANS LIMITED

54 Albert Road North, Reigate, Surrey RH2 9YR Telephone: 01 737 247571
Info website: www.connevens.com Online shopping: www.DeafEquipment.co.uk

SHEET T2b

Using an fmGenie with a telephone at home

Hearing aid wearers who already benefit from an fmGenie radio system can also use their fmGenie to enjoy much clearer phone conversations by fitting a telephone listening adaptor and a transmitter input adaptor.

The telephone listening adaptor can be fitted to any phone, analogue or digital, which has a plug in 'modular' handset.

The transmitter input adaptor plugs into the fmGenie transmitter and the phone conversation is then fed by the fmGenie receiver directly to the wearer's hearing aid either by direct input or neck loop.

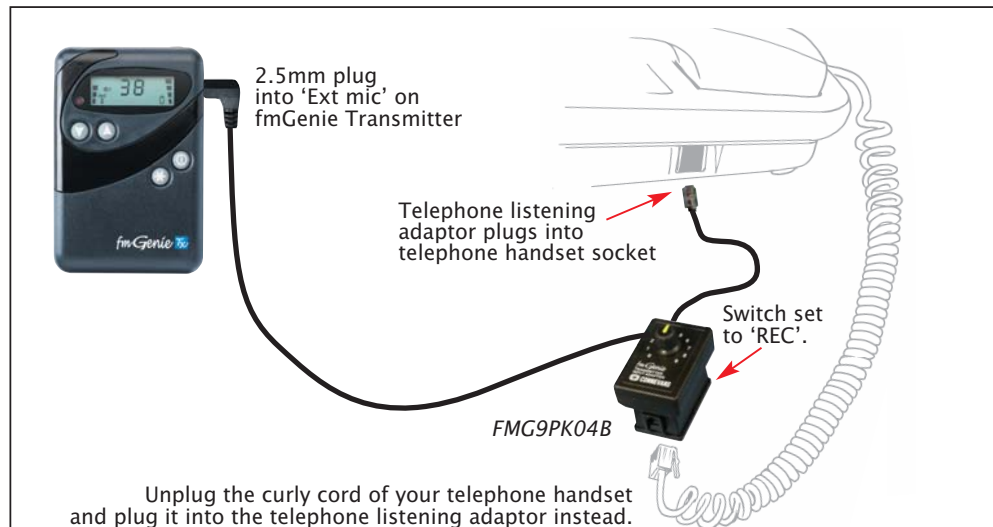


Using a CRM-220 with a telephone at home

Hearing aid wearers who already benefit from a CRM-220 radio system can also use their CRM-220 to enjoy much clearer phone conversations by fitting a telephone listening adaptor and a transmitter input adaptor.

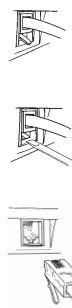
The telephone listening adaptor can be fitted to any phone, analogue or digital, which has a plug in 'modular' handset.

The transmitter input adaptor plugs into the CRM-220 transmitter and the phone conversation is then fed by the CRM-220 receiver directly to the wearer's hearing aid either by direct input or neck loop.



fmGenie telephone listening adaptor

The adaptor is connected in the curly cord lead between the telephone handset and the base unit. The 2.5mm jack then plugs into the fmGenie microphone socket - Tx or Rx.

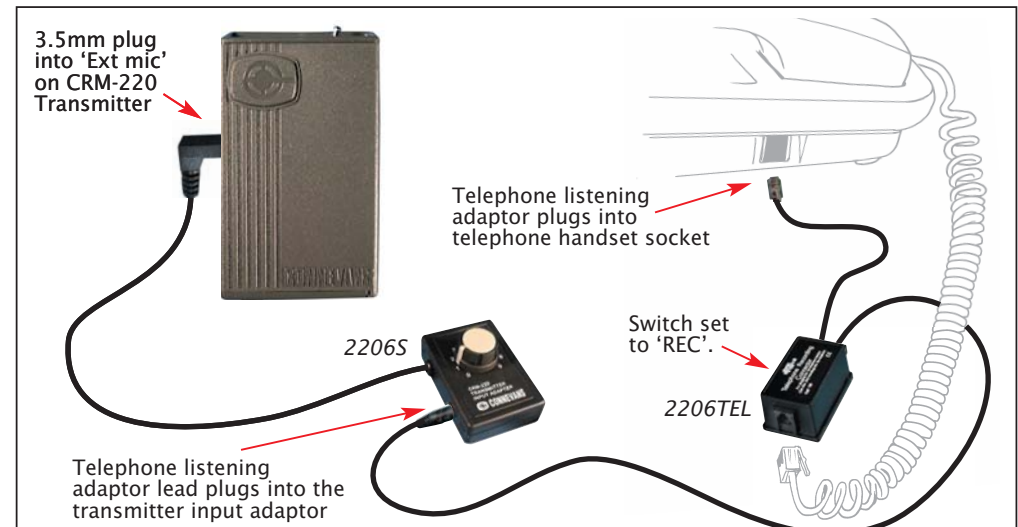


Unplugging the telephone handset

Sometimes it is necessary to use a small screwdriver to release the latch to remove the plug

Telephone handset cord connection plug & socket

For full details see *Connevens Catalogue*, section 1 - fmGenie



Telephone listening adaptor

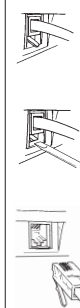
Part no. 2206TEL



CRM-220 transmitter input stereo input adaptor

Part no. 2206S

A transmitter input adaptor also allows you to connect a CRM-220 transmitter to other equipment such as hi-fi's, keyboards, computers, personal stereos, etc.



Unplugging the telephone handset

Sometimes it is necessary to use a small screwdriver to release the latch to remove the plug

Telephone handset cord connection plug & socket

For full details see *Connevens Catalogue*, section 1 - CRM-220

BPI 40THT2 V 3.0 April 2008 - fmGenie

BPI 40THT2 V 3.0 April 2008 - CRM-220

CONNEVANS LIMITED

54 Albert Road North, Reigate, Surrey RH2 9YR Telephone: 01 737 247571
Info website: www.connevens.com Online shopping: www.DeafEquipment.co.uk

SHEET T2a

CONNEVANS LIMITED

54 Albert Road North, Reigate, Surrey RH2 9YR Telephone: 01 737 247571
Info website: www.connevens.com Online shopping: www.DeafEquipment.co.uk

SHEET T2b